



**FUJIMI** 2019.6.28-30  
**PANORAMA**



## TECHNICAL GUIDE

\*as of 24<sup>th</sup> June,2019

### 1. General Info

Event Name:	Coupe du Japon XC#5 DH#1 Fujimi Panorama International UCI Class3 + UCI XCO Junior Series
Date:	28 <sup>th</sup> June – 30 <sup>th</sup> June 2019
Race Type:	UCI Class3
Venue:	Fujimi Panorama Resort 6666-703 Fujimi, Fujimi-machi, Suwa-gun, Nagano, 399-0211, JAPAN <a href="http://www.fujimipanorama.com">www.fujimipanorama.com</a>
Organizer:	Coupe du Japon FUJIMI PANORAMA Organizing Committee
Auspices:	Fujimi-machi/Fujimi Tourism Association/Fujimi-machi Chamber of Commerce /Fujimi Kaihatsu Kosha(Fujimi Development Corporation)
Main Sponsor:	FUJI DREAM AIRLINES Co., Ltd. (FDA)
Suponsors:	SHIMANO/OGK KABUTO
MC/PA:	Team REAL
TIMING	WAKITA SOFT
Secretaiat/Contact:	Dynoco Inc.
Website:	<a href="http://j.dynoco.jp/index.php?2019">http://j.dynoco.jp/index.php?2019</a>
Email:	<a href="mailto:info@dynoco.jp">info@dynoco.jp</a>

2. Race and Entry Fee \*Entry deadline; 8<sup>th</sup> June 2019

Rider from overseas can pay the fee at the registration office of the venue (JPY ONLY).

Class		DHI	XCO	Remarks
Elite	Women	8,000JPY	8,000JPY	For JCF or UCI License Holders  *Japan Domestic Riders are required Team Registration of MTB League <a href="https://mtb-l.jp">https://mtb-l.jp</a>
	Men		8,500JPY	
Junior	Women	-	8,000JPY	
	Men			
Youth	Women	8,000JPY		
	Men			
Masters	Women			
	Men			
Advance	Men	7,500JPY		
Challenge	Women	7,500JPY		
	Men			
FDA Panorama Cup  *Open Class	Women	-		6,500JPY
	Men			
	Over40	6,000JPY	-	Ages 40 and over
	Over50			Ages 50 and over
	Open Hi			Intermediate Level
	Open Lo			Beginner Level
	Girls	5,500JPY		Junior High School Ages and Over
	Kids Lo, Girls	4,500JPY	2,500JPY	1 <sup>st</sup> -3 <sup>rd</sup> Grade of Elementary School
	Kids Lo, Boys			
	Kids Hi, Girls	4,500JPY	3,500JPY	4 <sup>th</sup> -6 <sup>th</sup> Grade of Elementary School
Kids Hi, Boys				
Cadet, Girls	5,500JPY		1 <sup>st</sup> -2 <sup>nd</sup> Grade of Junior High School	
Cadet, Boys				

Gondola ticket price separately  
4950JPY par day

### 3. Time Schedule

28 <sup>th</sup> June		
08:30–16:00	License Control / Registration	
-08:30	DHI: Course Walk	
08:30-	Gondola Ticket Center Open / Uplift Start	
09:15–14:45	DHI: Official Course Training *All Category	
15:00– 15:40–	DHI: Timed Session	Men Elite / Men Youth / Men Masters Women Elite / Women Youth
17:00–	Team Manager Meeting for DHI	
29 <sup>th</sup> June		
08:00–16:00	License Control/Registration	
09:00–16:00	XCO: Official Course Training	
08:45–09:15 09:15–10:00 10:00–10:50	DHI: Official Course Training	Challenge / Advance / Masters / Youth / FDA Panorama Cup All Category Elite /Youth /Masters
11:20–11:50	DHI: FDA Panorama Cup *(Number of Riders) Open Hi(8), Open Lo(12), Cadette Man(4) Cadette Women(1), Boys(4), Girls(1)	
12:00-12:10	DHI: Awards Ceremony for FDA Panorama Cup	
12:10-	DHI: Finals DHI: Qualification DHI: Finals	Men Challenge (25) / Women Youth (1) /Women Challenge (1) Men Youth (12) / Men Masters (34) / Women Elite (6) / Men Elite (46) Men Advance (25) /Men Youth (5) /Men Masters (10) /Women Elite (6) / Men Elite (30-41 *Including 'Super Elite')
16:00-	DHI: Awards Ceremony	
17:00–	Team Managers' Meeting for XCO	
30 <sup>th</sup> June		
06:45-08:30	License Control / Registration	
07:10-07:40	XCO: Official Course Training	
8:00-	Men Challenge (49) Women Challenge (1) FDA Cup Men (7) FDA Cup Women (2)	
9:20-	Men Youth (8)	
9:22-	Men Advance (54)	
11:00- 11:02-	Men Master (68) Women Elite (14) Women Youth (3) Women Masters (3)	
12:40-	Kids Lo Boys (8) / Kids Lo Girls (2) Cadette Men (3) / Cadette Women (1) / Kids Hi Boys (14) / Kids Hi Girls (4)	
13:45- 13:47-	Men Elite (51) Men Junior (9)	

\*Awards Ceremony will be held Immediately after each race.

4. Course Map



# FUJIMI PANORAMA

2019.6.28-30



## DOWNHILL COURSE MAP

**LENGTH 1500M**  
**START ALTITUDE 1333M**  
**FINISH ALTITUDE 1052M**



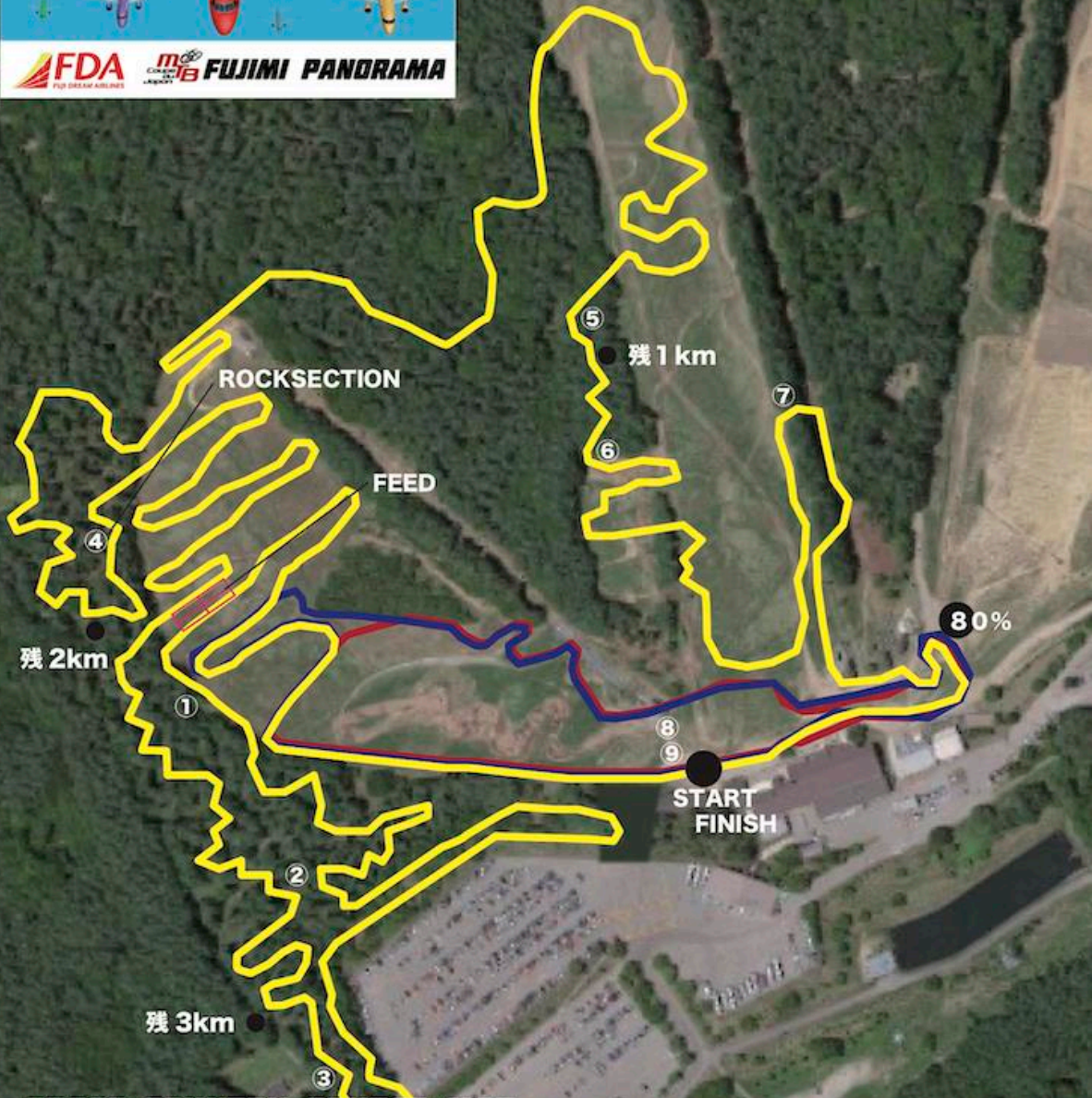


**FUJI DREAM AIRLINES**

日本をいい色に。



**FUJIMI PANORAMA**



**CROSS COUNTRY COURSE MAP**

**LENGS:4330M ALTITUDE LO 1036M HI 1139M**

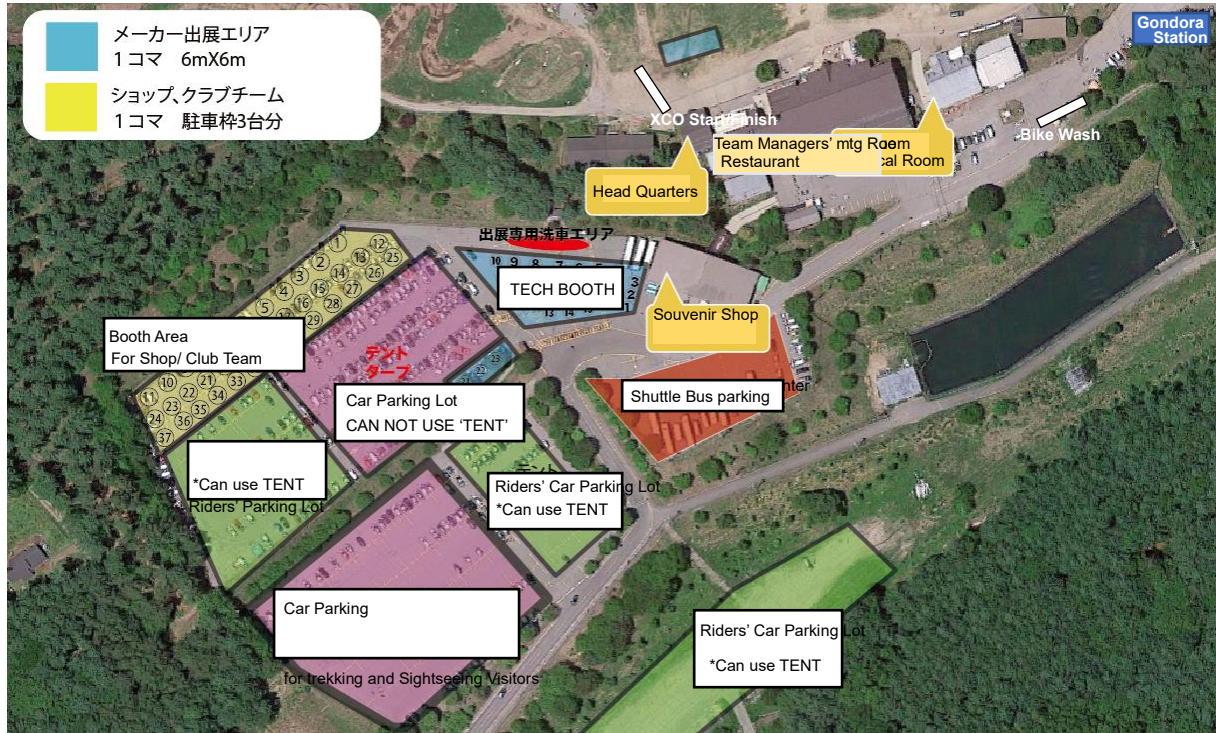
**KIDS LO LENG:808M ALTITUDE LO 1045M HI 1072M**

**KIDS HI & CADET**

**LENGS:975M ALTITUDE LO 1045M HI 1079M**



## 5 Venue Map



## 6 Access

It takes about 3 hours from Tokyo, and 7 minutes from Minami Suwa IC on Chuo Express Highway by car.

By train, the nearest station is "Fujimi". It takes about 2.5 hours from Shinjuku Station by JR Chuo-Line. From Fujimi station, take a Shuttle Bus or a Taxi to the race venue. The shuttle bus will depart in front of the station at 10am every day. There is no bus from the venue to the station. A Taxi Fee is about 1,500JPY.



### 📍 Street address

Yubinbango399-0211 Nagano Prefecture Suwa-gun  
Fujimi-machi Fujimi 6666-703

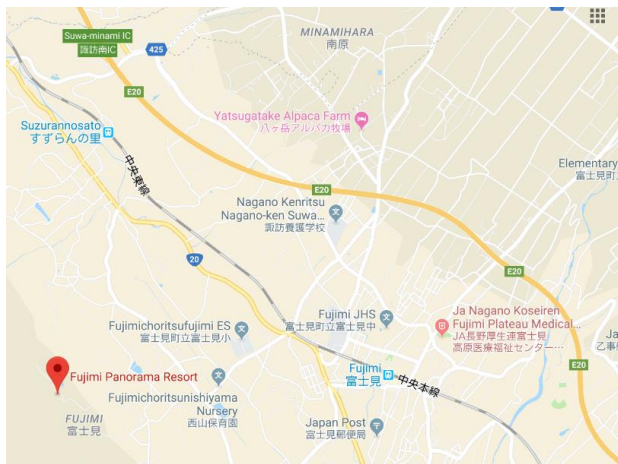
### 🚗 Search in car navigation systems

"Fujimi Panorama Resort"

There is a navigator to guide the summit and narrow mountain roads. Please confirm me your visit and also to guide signboard.

### 🛣️ From the highway

About 7 minutes down the Chuo Expressway in  
Minami Suwa IC



6. Prize Money \*Elite Class Only

Rank/Place	
1 <sup>st</sup>	€ 200
2 <sup>nd</sup>	€ 150
3 <sup>rd</sup>	€ 100
4 <sup>th</sup>	€ 75
5 <sup>th</sup>	€ 50

7. UCI Point Scale

Rank/Place	Elite	XCO Junior Series
1	10	90
2	6	70
3	4	60
4	2	50
5	1	40
6		35
7		30
8		27
9		24
10		22
11		20
12		18
13		16
14		14
15		12
16		10
17		9
18		8
19		7
20		6
21		5
22		4
23		3
24		2
25		1